

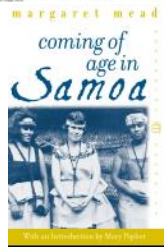
Ch. 10: Gender

- **Why the focus on American Samoa?**
- **A walk through Ferrante's core concepts**



Why the focus on Samoa?

- **The chapter's focus**
- **Another reason: Margaret Mead's pioneering anthropological work**



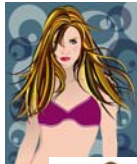
**Core Concepts 1-2:
The distinction
between sex and
gender**



- **What is the basic distinction involve?**
- **Sex as biology: why is the distinction between male and female not as clear as we tend to think?**

**Gender as a social construct:
what does this mean? What
is it rooted in?**

- *masculinity and femininity*
- *Margaret Mead's work in New Guinea*
- *Male and female in Samoa*
- *the ideal and the real*



Core Concept 3: Gender polarization

- *What is this concept designed to tell us?*
- *What kind of evidence for it exists?*
- *Do all societies have it equally?*
- *Is compliance the only option?*



*What's the point made
in these two pictures
from the text?*

**Core Concept 4: Can there be more
than two genders?**

- *the case of fa'afafine in Samoa*
- *possible explanations*
- *other examples from
other societies?*



Introduction to Sociology

Core Concepts 5-6: Socialization and Sexism

- What are the key points about each?
- What is the evidence on how U.S. socialization is changing?
- The role of commercialization and structural constraints



For a revealing gallery of advertising offenders, see: <http://www.about-face.org/>

Introduction to Sociology

Table 10.2 20 Leading Occupations of Full-Time Female Workers, 2006

Occupations	Total Workers (in 1,000s)	% Workers Who Are Women	Women's Median Weekly Income	Men's Median Weekly Income
All	46,269	43.6	\$600	\$743
Secretaries/administrative assistants	2,540	96.7	\$564	\$559
Elementary and middle school teachers	1,490	92.2	\$624	\$620
Registered nurses	1,713	90.3	\$971	\$1,074
Nursing, psychiatric, and home health aides	1,236	88.1	\$395	\$471
Customer service representatives	1,110	79	\$353	\$619
Cashiers	1,044	73.6	\$327	\$367
First-line supervisors/office managers	990	70.1	\$598	\$912
Bookkeeping, accounting, and auditing clerks	998	68.6	\$502	\$637
Accountants and auditors	898	61.2	\$844	\$1,160
Receptionists and information clerks	—	—	—	—
First-line supervisors/managers of retail sales workers	—	—	—	—
Retail salespersons	—	—	—	—
Maids and housekeepers	—	—	—	—
Preschool and kindergarten teachers	—	—	—	—
Other clerks (general)	—	—	—	—
Walters	—	—	—	—
Secondary school teachers	—	—	—	—
Teacher assistants	—	—	—	—
Social workers	—	—	—	—
Child care workers	—	—	—	—
Nonresidential building construction workers	—	—	—	—

How much overlap?
How much difference?

Pay equity vs. comparable worth

Table 10.3 20 Leading Occupations of Full-Time Male Workers, 2006

Occupations	Total Workers (in 1,000s)	% Workers Who Are Men	Men's Median Weekly Income	Women's Median Weekly Income
All	58,747	56.3	\$734	\$600
Dishwashing workers and truck drivers	2,708	96	\$691	\$436
First-line supervisors or managers of retail sales workers	1,321	95	\$732	\$526
Construction laborers	1,292	98.9	\$513	—
Laborers and freight, stock, and material movers (hand)	1,272	98.8	\$484	\$412
Carpenters	1,189	98	\$598	—
Janitors and building cleaners	1,076	72.1	\$447	\$376
Sales representatives (wholesale and manufacturing)	905	75.1	\$697	\$729
Grain and feed mill workers	832	95.2	\$433	—
Chief executive officers	792	75.1	\$1,267	\$1,422
Electricians	769	99	\$734	—
Food preparation workers	739	90.0	\$377	\$340
Automotive service technicians and mechanics	697	99.7	\$636	—
General and operations managers	605	72	\$1,258	\$917
First-line supervisors or production and operating workers	600	90	\$632	\$587
Stone cutters and tiler workers	642	61	\$457	\$425
First-line supervisors of construction trades and extraction workers	624	98.4	\$666	—
Computer software engineers	623	80	\$1,610	\$1,272
Police and sheriff's patrol officers	566	89	\$654	\$708
Accountants and auditors	562	39.9	\$1,160	\$844
Security guards and gaming surveillance officers	521	75.1	\$499	\$416
Industrial truck and tractor operators	517	94.1	\$514	—
Business operations centers	—	—	—	—

Introduction to Sociology

Core Concepts 7-8: Causes of Gender Inequality and Feminism (as perspective and movement)



Core Concept 9: Gender and Politics



© Whitworth, Cengage Learning
