

Fall 2007

English 101: Children's Myths, Journeys, and Quests

50:350:101:06

MWF 11:15-12:10, ATG 106

Instructor: **Erica Maxwell**

Office: ATG- 467

Office Hours: Monday & Wednesday 9:30am-10:30am
& by appointment

Phone: (856) 225-6129

emaxwell@camden.rutgers.edu



Course Description:

Peter Pan doesn't have to grow up, but most other children eventually will. And as they do, adults from Barrie to Baum to Neil Gaiman write them stories telling them how they should be doing it. Some stories are odes to the majority adult "because I said so" school, and others a bit devious. The class will discuss a variety of children's passages into adult thinking, responsibility, and sexuality, over time and cultural space. This course will function as a bridge into academic writing, requiring writings throughout the semester, as well as a writing portfolio.

As we jump after Alice down the rabbit hole, the questions and discoveries we make will be incorporated into academic writing. This course will focus on the process that transforms ideas and discussions into college writing.

Reading and Materials:

1. JM Barrie, *Peter Pan* (Aladdin Books) 689866917
2. L. Frank Baum, *The Wizard of Oz* (HarperTrophy) 0688166776
3. Lewis Carroll, *Alice's Adventures in Wonderland* (Signet Classic) 0451527747
4. L.M. Montgomery, *Anne of Green Gables* (Signet Classic) 0451528824
5. Neil Gaiman, *Coraline* (Harper Perennial) 0061139378
6. Joanne Harris, *Chocolat*(Penguin) 014100018X
7. Lester Faigley, *The Brief Penguin Handbook* (Pearson Longman) 020530902X
(Must buy at bookstore and keep MyCompLab registration card!)

Grading:

Paper One (3-4 pages): (10% of paper grade from draft work)	15%
Paper Two (5 pages): (10% of paper grade from draft work)	20%
Paper Three (5 pages): (10% of paper grade from draft work)	25%
Final Portfolio:	20%
Classroom Participation & Assignments, Homework, Quizzes	20%

Course Policies:

Attendance/ Lateness:

You have four (4) “free” absences, which you can take for any reason, but after that you will lose points from your overall grade. More than nine (9) absences means failing the course. For special circumstances, please see me after class or in office hours. Also, I know that early morning classes can seem cruel and unusual; however, come on time. Chronic lateness will be treated like absences. And, once you make it to class...

Participation:

Be prepared to engage, talk, debate! This is also your chance to hash out thoughts, ideas, and frustrations. Speaking up and giving voice to your ideas as we go through the reading and secondary materials (movies, news, music) will help you get more out of the class, as well as meaning a healthy participation grade.

Homework:

Expect homework. In addition to the three Papers, I will also assign short response writings/journal entries. These should be about one page, typed and double-spaced in MLA format. Sometimes I will give you discussion questions, so be prepared to come to class with your written answers.

Quizzes:

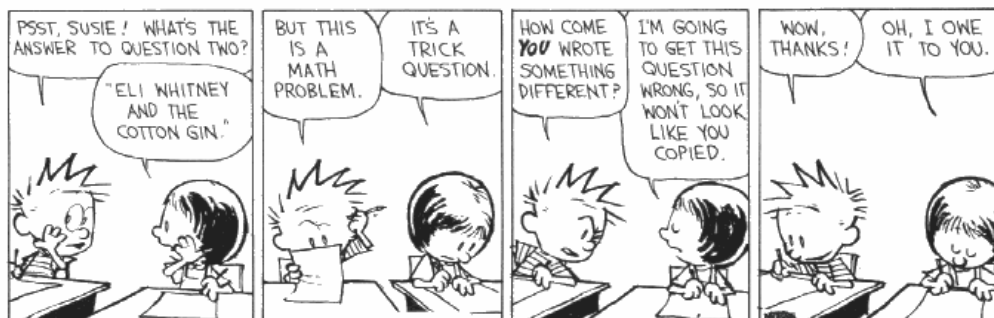
I reserve the right to quiz. Do the reading.

Papers:

All papers must be double-spaced in 12 pt. Times New Roman Font in MLA format (MLA format is covered in Chapter 21 of the Penguin Handbook). I do not accept papers by e-mail, disk, or flash drives. Please turn in your hard copies on time in class. Late papers will be penalized by one letter grade per calendar day.

Plagiarism, a Note:

Plagiarizing assignments will receive failing grades or can even get you suspended from the university. See the Penguin Handbook, chapter 19 about citation rules. Also, if you are having trouble, please feel free to speak with me, or make an appointment at Rutgers Learning Center.



Calvin &
Hobbes
by
Bill
Watterson

Turn off all cell phones and such!

Schedule—subject to change

Should this change, I will give you notice. Small writing assignments (given in class) will be assigned with some of the readings. Reading assignments from the Penguin Handbook will be announced.

Unit One: No Place Like Home

Wed, September 5 Introduction to Course

Fri, September 7 *Chocolat* (read pgs. 1-50)
Response Writing Due

Mon, September 10 *Chocolat* (51-100)

Wed, September 12 *Chocolat* (101-151)

Fri, September 14 *Chocolat* (152-201)
Response Writing Due

Mon, September 17 *Chocolat* (202-251)

Wed, September 19 *Chocolat* (252-306)
Thesis Idea Due

Fri, September 21 *The Wonderful Wizard of Oz* (11-59)

Mon, September 24 *Wizard* (63-114)

Wed, September 26 *Wizard* (117-183)

Fri, September 28 *Penguin Handbook* “Rewriting, Editing and Proofreading” (60-70)
“Bring Your Draft to Class Day”
Paper One Rough Draft Due (two copies)

Mon, October 1 *Wizard* (187-244)

Wed, October 3 *Wizard* (247-307)

Unit Two: Neverworlds and Rabbit Holes

Fri, October 5 *Peter Pan* (1-27)

Mon, October 8 *Peter* (28-63)

Wed, October 10 *Peter* (64-94)

Fri, October 12 *Peter* (95-123)

Paper One Due!

Mon, October 15 **Library Orientation (Class in E-Classroom, library basement)**

Wed, October 17 *Peter* (124-159)

Fri, October 19 *Peter* (160-183)

Mon, October 22 *Peter* (184-228)

Thesis Idea Due

Wed, October 24 *Alice in Wonderland* (1-39)

Fri, October 26 *Alice* (40-67)

Mon, October 29 *Alice* (68-94)

Wed, October 31 (Halloween) *Alice* (94-118)

Paper Two Rough Draft Due

Fri, November 2 “Bring Your Draft to Class” (two copies)

Unit Four: Strange Girls

Mon, November 5 *Anne of Green Gables* (9-49)

Wed, November 7 *Anne* (50-87)

Fri, November 9 *Anne* (88-133)

Mon, November 12 *Anne* (134-168)

Paper Two Due!

Wed, November 14 *Anne* (169-204)

Fri, November 16 *Anne* (205-236)

Mon, November 19 *Anne* (236-273)

Wed, November 21 *Anne* (274-306)

Thesis Idea Due

Fri, November 23 (Thanksgiving Break, No Class!)

Mon, November 26 *Coraline* (1-33)

Wed, November 28 *Coraline* (35-66)

Fri, November 30 *Coraline* (67-114)

Mon, December 3 “Bring Your Draft to Class” (two copies)
Final Paper Rough Draft Due

Wed, December 5 *Coraline* (115-139)

Fri, December 7 *Coraline* (139-162)

Mon, December 10 Extra “Bring Your Draft to Class”(two copies)

Wed, December 12 **Final Paper Due**

**The portfolios for this class are due on during the final exam period for this class:
Wednesday, December 19th, 9am-12pm.**

Happy Holidays!