

Fall 2007

English 101: Fairy Tales through Time
50:350:101:01
MWF 8:00-8:55, ATG 219

Instructor: **Erica Maxwell**

Office: ATG- 467

Office Hours: Monday & Wednesday 9:30am-10:30am
& by appointment

Phone: (856) 225-6129

emaxwell@camden.rutgers.edu



Course Objective:

Just who is Little Red Riding Hood anyway, and why is a wolf eating her grandmother? Why does Bluebeard have a closet-full of dead wives? If the Little Mermaid commits suicide, then where does that talking crab come in? Who is telling who what and why? How do the stories change over time and by place? We'll talk and write about the answers to these questions and more as we read tales about little girls in peril, pirates, and the nasties that go bump in the night. This course will function as a bridge into academic writing, requiring writings throughout the semester, as well as a writing portfolio.

As we explore the stories of villains and mermaids, the questions and discoveries we make will be incorporated into academic writing. This course will focus on the process that transforms ideas and discussions into college writing.

Reading and Materials:

1. Joanne Harris, *Chocolat* (Penguin) 014100018X
2. ed. Maria M. Tatar, *The Classic Fairy Tales* (Norton) 0393972771
3. Carlo Collodi, *Pinocchio* (Tor Books) 0765305917
4. Gregory Maguire, *Wicked* (Regan Books) 0060745908
5. Lester Faigley, *The Brief Penguin Handbook* (Pearson Longman) 020530902X
(Must buy at bookstore and keep MyCompLab registration card!)

Grading:

Paper One (3-4 pages): (10% of paper grade from draft work)	15%
Paper Two (5 pages): (10% of paper grade from draft work)	20%
Paper Three (5 pages): (10% of paper grade from draft work)	25%
Portfolio:	20%
Classroom Participation & Assignments, Homework, Quizzes	20%

Course Policies:

Attendance/ Lateness:

You have four “free” absences, which you can take for any reason, but after that you will lose points from your overall grade. For special circumstances, please see me after class or in office hours. Also, I know that early morning classes can seem cruel and unusual; however, come on time. Chronic lateness will be treated like absences. And, once you make it to class...

Participation:

Be prepared to engage, talk, debate! This is also your chance to hash out thoughts, ideas, and frustrations. Speaking up and giving voice to your ideas as we go through the reading and secondary materials (movies, news, music) will help you get more out of the class, as well as meaning a healthy participation grade.

Homework:

Expect homework. In addition to the three Papers, I will also assign short response writings/journal entries. These should be about one page, typed and double-spaced in MLA format. Sometimes I will give you discussion questions, so be prepared to come to class with your written answers.

Quizzes:

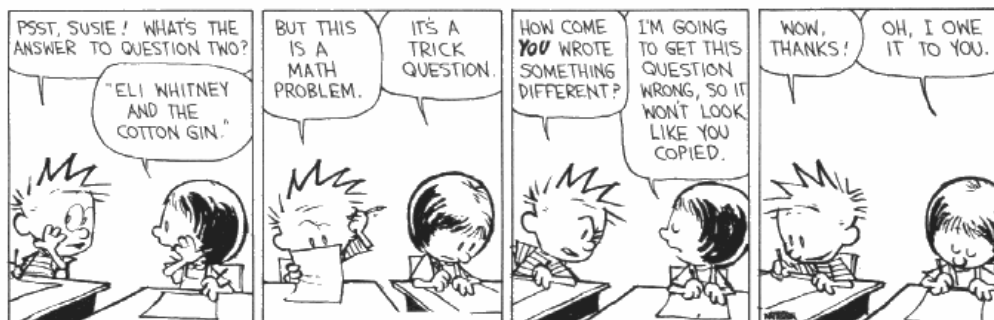
I reserve the right to quiz. Do the reading.

Papers:

All papers must be double-spaced in 12 pt. Times New Roman Font in MLA format (MLA format is covered in Chapter 21 of the Penguin Handbook). I do not accept papers by e-mail, disk, or flash drives. Please turn in your hard copies on time in class. Late papers will be penalized by one letter grade per calendar day.

Plagiarism, a Note:

Plagiarizing assignments will receive failing grades or can even get you suspended from the university. See the Penguin Handbook, chapter 19 about citation rules. Also, if you are having trouble, please feel free to speak with me, or make an appointment at Rutgers Learning Center.



Calvin &
Hobbes
by
Bill
Watterson

Turn off all cell phones and such!

Schedule—subject to change

Should this change, I will give you notice. Small writing assignments (given in class) will be assigned with some of the readings. Reading assignments from the Penguin Handbook will be announced.

Unit One: The Girl, the Witch, and the Big Bad Wolf

Wed, September 5 Introduction to Course

Fri, September 7 *Chocolat* (read pgs. 1-50)
Response Writing Due

Mon, September 10 *Chocolat* (51-100)

Wed, September 12 *Chocolat* (101-151)

Fri, September 14 *Chocolat* (152-201)

Mon, September 17 *Chocolat* (202-251)

Wed, September 19 *Chocolat* (252-306)
Thesis Idea Due

Fri, September 21 *Classic Fairy Tales* “Little Red Riding Hood” (10-24)
Response Writing Due

Mon, September 24 cont. “Little Red”

Wed, September 26 *CFT* “Snow White” (80-100)

Fri, September 28 *Penguin Handbook* “Rewriting, Editing and Proofreading” (60-70)
“Bring Your Draft to Class Day”
Paper One Rough Draft Due (two copies)

Mon, October 1 cont. “Snow White”

Unit Two: The Bad Boys

Wed, October 3 *Pinocchio* (15-56)

Fri, October 5 *Pinocchio* (57-103)

Mon, October 8 *Pinocchio* (103-147)

Wed, October 10 *Pinocchio* (147-186)

Fri, October 12 *Pinocchio* (187-222)
Paper One Due!

Mon, October 15 Library Orientation (e-classroom library basement)

Wed, October 17 *CFT* “Bluebeard” (144-178)

Fri, October 19 cont. “Bluebeard”
Thesis Idea Due

Mon, October 22 *CFT* “Beauty and the Beast” (144-178)

Wed, October 24 cont. “Beauty”

Unit Three: The Transmogrified Fairy Tale

Fri, October 26 *CFT* “The Little Mermaid” (216-233)

Mon, October 29 “Bring Your Draft to Class Day”
Paper Two Rough Draft Due (two copies)

Wed, October 31 (Halloween) cont. “Mermaid”

Fri, November 2 *CFT* “The Happy Prince” (253-260)

Mon, November 5 *Wicked* (1-31)

Wed, November 7 *Wicked* (32-62)

Fri, November 9 *Wicked* (64-92)

Mon, November 12 *Wicked* (93-129)
Paper Two Due!

Wed, November 14 *Wicked* (130-169)

Fri, November 16 *Wicked* (169-206)

Mon, November 19 *Wicked* (206-243)

Wed, November 21 *Wicked* (244-278)

Fri, November 23 **Thanksgiving Break, No Class!**

Mon, November 26 *Wicked* (278-329)
Thesis Idea Due

Wed, November 28 *Wicked* (332-365)

Fri, November 30 *Wicked* (365-406)

Unit Four: Winter's Tales

Mon, December 3 *Student Choice*

Wed, December 5 “Bring Your Draft to Class Day”
Final Paper Rough Draft Due (two copies)

Fri, December 7 *Student Choice*

Mon, December 10 Extra “Bring Your Draft to Class Day” (two copies)

Wed, December 12 **Final Paper Due!**

**The portfolios for this class are due on during the final exam period for this class:
Friday, December 21st, 2-5 PM.**

Happy Holidays!